

# Welcome to Franklin Elementary!

Before we begin:

Please mute your microphone.



This presentation will be recorded.

Feel free to turn off your camera if you choose.



The presentation will begin shortly.

# INTRODUCTION OF OUR TEAM



Liz  
Drahota

JoAnna  
Bequette

Amy  
James

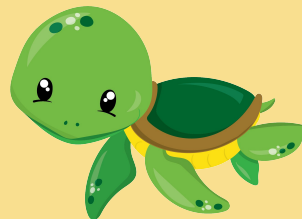
Michelle  
Krahling



# A Day in the Life of a Kindergartener

Today, we want you to get a little glimpse of a day in the life of a Kindergartener.

We care deeply for our students, your child, and it is our goal for them to gain a love of learning through fun and educational activities throughout the school day.



# 7:50 School Begins

Our school day begins at 7:50. Breakfast is available at no cost.





# Good Morning! Independent Morning Jobs



Walking into school, taking off and putting on outside clothing (zipping, buttoning, etc.), tying shoes (if tie shoes - otherwise velcro shoes please!), organizing their materials, getting started on morning work



# Reading



Reading is taught and practiced in many different ways throughout the day.





# Shared Reading



Teacher modeling comprehension and reading strategies. Students work together with the teacher and each other to practice strategies.







# Phonics



Students interactively practice phonics (sounds corresponding to letters, etc.) phonemic awareness (hearing sounds and knowing that words are made up of individual sounds), rhyming, spelling, decoding new words, and more!



# Small group reading



Teacher and Intervention Small Groups



Word Work



Work on Writing



Read to Self



Listen to Reading





# Read Aloud



Reading quality literature every day with a purpose.







# Entering Kindergarten



## Reading Expectations

Students can identify and write their names independently beginning with an uppercase letter and using lowercase for the rest of the letters

Know at least half of the uppercase and lowercase letters

Know several letter sounds



# Math



Small Group Math Learning Games and Activities



Partner Activities



Independent Activities



# Calendar Math

 The Date

 Number of Days in School

 Weather and Temperature

 Counting and Number Sense

 Graphing



# Entering Kindergarten Math Expectations



Count to 20



Identify and recognize numbers 0-10







1-to-1 counting



Identify basic shapes



# Writing

-  Modeled Writing
-  Shared Writing
-  Guided Writing
-  Independent Writing



# Lunch and Recess



We have 50 minutes for lunch and recess!  
Students eat lunch with their friends, check  
with an adult, and then go outside to play!





# Content

Science

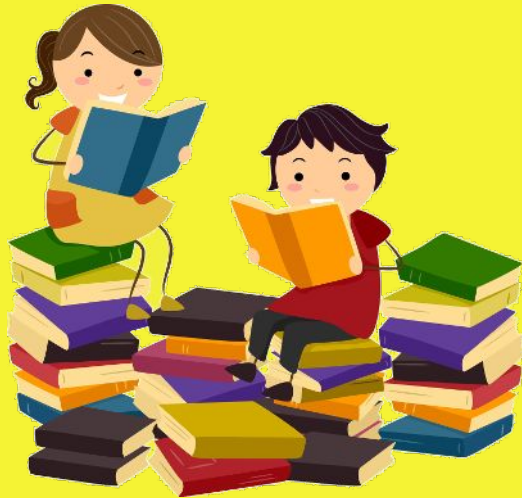
Social Studies

Health



# Special Area Subjects

We attend media, library, art, music, and physical education 5 days a week for 50 minutes each day.



# Media and Library

In Media, students learn to safely use technology and the internet. They will also check out books from our library to bring home and share with their family.



# Art



In Art, students explore their creativity through a variety of mediums and techniques: clay, adding texture, primary colors, and more!



# Music

In Music, students explore many musical concepts including singing, a steady beat, and instruments including hand drums, xylophones, and tambourines.



# Physical Education



In Phy. Ed., students practice large and fine motor skills, practice hand/eye and foot/eye coordination, and work on balance. Students will need a pair of gym shoes to keep at school.

If students cannot tie their shoes independently, they **MUST** have non-tie shoes, such as velcro. Thank you for understanding!





# S.M.A.R.T.

Stimulating Maturity Through  
Accelerated Readiness Training

Learning Through Movement!



# Kid Time

## Social Skills

- Share with others
- Take turns
- Use words to solve problems
- Be a team play
- Have conversations with peers



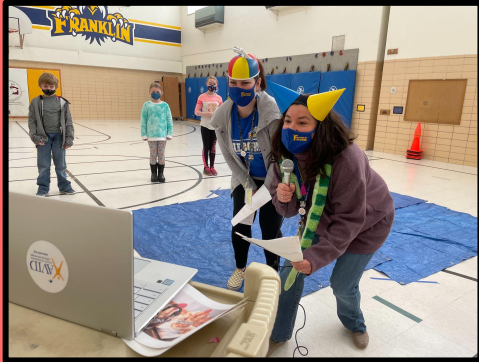
# 2:30 Dismissal

After a day full of fun learning experiences and activities, school dismisses at 2:30 each day.

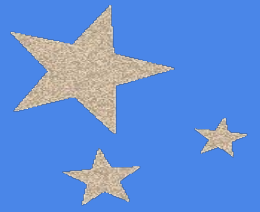


# Things we LOVE about Franklin!

1. Our Students, Staff, Families!
2. We are Rich with Diversity
3. Smart Room
4. Technology use in the classroom
5. Hands on learning and play based activities



# Franklin Behavior Expectations



## PBIS Program Falcons SOAR!

S- Safety First  
O- Our Responsibility  
A- Always Try Your Best  
R- Respect Yourself and Others

Behavior expectations are taught:

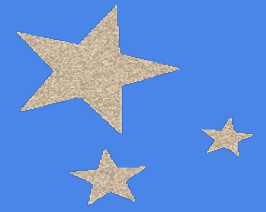
- Using positive language
- To ALL Franklin students
- Throughout the year
- For ALL areas of the school

When students meet expectations we celebrate with:

- Verbal recognition
- SOAR Slips
- Falcon Stand Outs
- Student of the Month



# Social Emotional Learning



## School Counselor

Jennifer Berg

- Classroom whole group lessons
- Social skills & support groups
  - Identifying & Coping with Emotions
  - Getting along with others and managing conflict
  - Worry & anxiety
  - Family changes
  - Confidence building
  - Grief & loss
- Individual counseling & support
- New student connection
- Attendance support & resources
- Parent consultation & collaboration

## School Social Worker

Tiana Iverson

- Community resource connection
- Attendance support & resources
- Homelessness support
- Ensuring basic needs met
- Social skills & support groups
  - Identifying & Coping with Emotions
  - Worry & anxiety
  - Connecting to school/attendance
  - Positive mental health support
- Individual counseling & support
- Parent consultation & collaboration



# ACES School Age Care

ACES School Age Care Program offers child care for MAPS elementary students (K-5th grade). ACES locations are certified centers through the Minnesota Department of Human Services.

## Care Options:

- Before School Care = 6:30am until school starts
- After School Care = after school until 6:00pm
- Non School Day Care = 6:30am-6:00pm (select locations)

## Activities:

Children participate in a variety of engaging and developmentally appropriate activities including art, science, social recreation, physical activity, group games, outdoor play, and MORE!

## Registration:

- Timeline & registration process
- What can parents do now



ACES | 507-387-5501 | [aces@isd77.org](mailto:aces@isd77.org) | [mankatocer.com](http://mankatocer.com)

# Health and Wellness

## What Immunizations Does My Child Need To Start School?

- Hepatitis B - 3 doses
- DTap - 5 doses
- Polio - 4 doses
- MMR - 2 doses
- Varicella (Chicken pox) -2 doses



If your child has not completed this list of vaccines please schedule a well child visit with your child's provider as soon as possible.

# Health and Wellness

What do I do if my child has a health condition or needs to take medication while at school?

- Complete a health condition form for your child.
  - General Health Condition
  - Asthma Plan - includes medication administration form
  - Seizure Plan - includes medication administration form
  - Diabetes Plan - includes medication administration form
- Complete Consent form for Administration of Medication During the School Day
  - Both you and your child's medical provider need to sign this form before we can administer the medication in school.
  - Parents must bring the medication to the health office. Do Not send medication with your child.
  - Medication must be in the original bottle, clearly labeled with your child's name and an expiration date.

# Health and Wellness

## When should my child stay home due to illness?

- Fever of 100.0-May return when no fever for 24 hours
- Vomiting or Diarrhea- May return after 24 hours since last episode
- If your child feels ill enough that he/she would not benefit from being in school.
- If your child has been to the doctor and the doctor says that your child should stay out of school for a period of time.
- Strep Throat - May return after 12 hours after starting antibiotic if all of the above criteria are met.
- Covid 19 Decision Tree for People in Schools, Youth, and Child Care Programs.



Get involved!



Join the Franklin PTO

PTO President- Dionne Kittleson

Our clothing sale starts today!

<http://www.mybstarkstore.com/franklin/>

# Questions or Concerns? Q/A Time



- Talk to your Homeroom Teacher
- Talk to our School Counselor
- Talk to the Principal
- We're happy to help you out!

All contact information can be found at:

<https://fe.isd77.org/>

*School - Franklin Elementary K-5 School*

Administrative Assistants: Linda Gravley - 507-345-4287

Leigh Schofield - 507-345-4287

Principal: Brian Grensteiner - 507-207-5102

Counselor: Jennifer Berg - 507-207-5159

School Social Worker: Tiana Iverson - 507-327-0186

# Thank You For Joining Us Tonight!

\*Invitation for May 18th from 5:30-6:00 PM  
Franklin Playground for a meet and greet with the K-Team!

